

Directions for adding the teachers lounge printer to your computer.

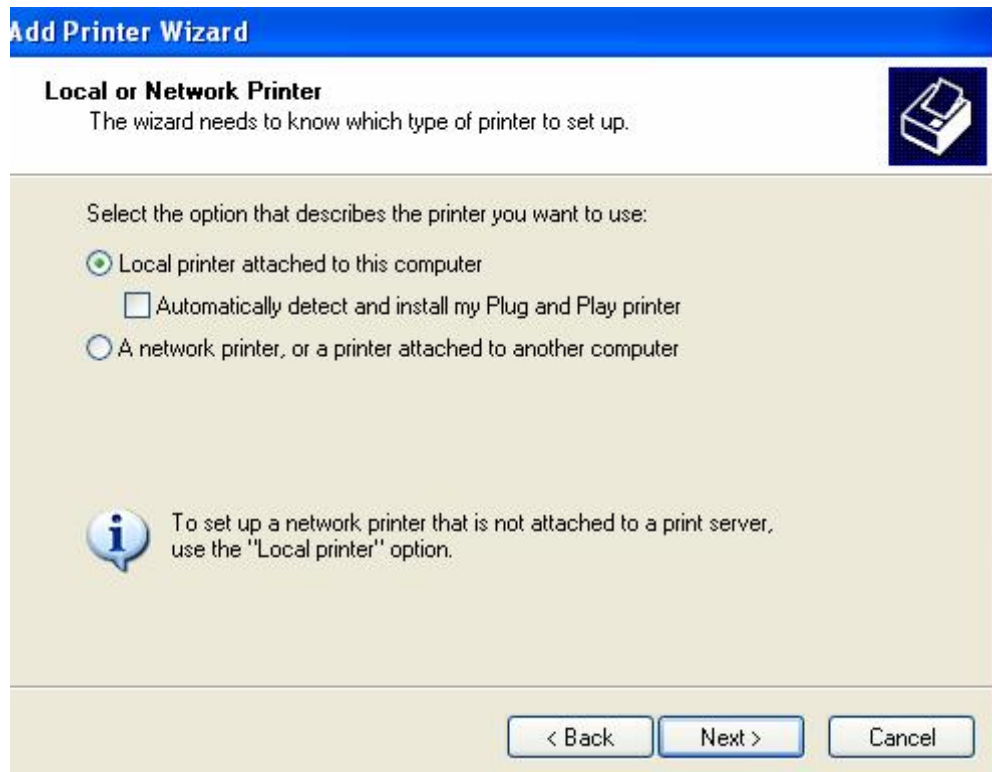
Go to our home page and download the printer driver

Once the file downloads, click on it and unzip it. Remember where it unzips. You will need to navigate to it.

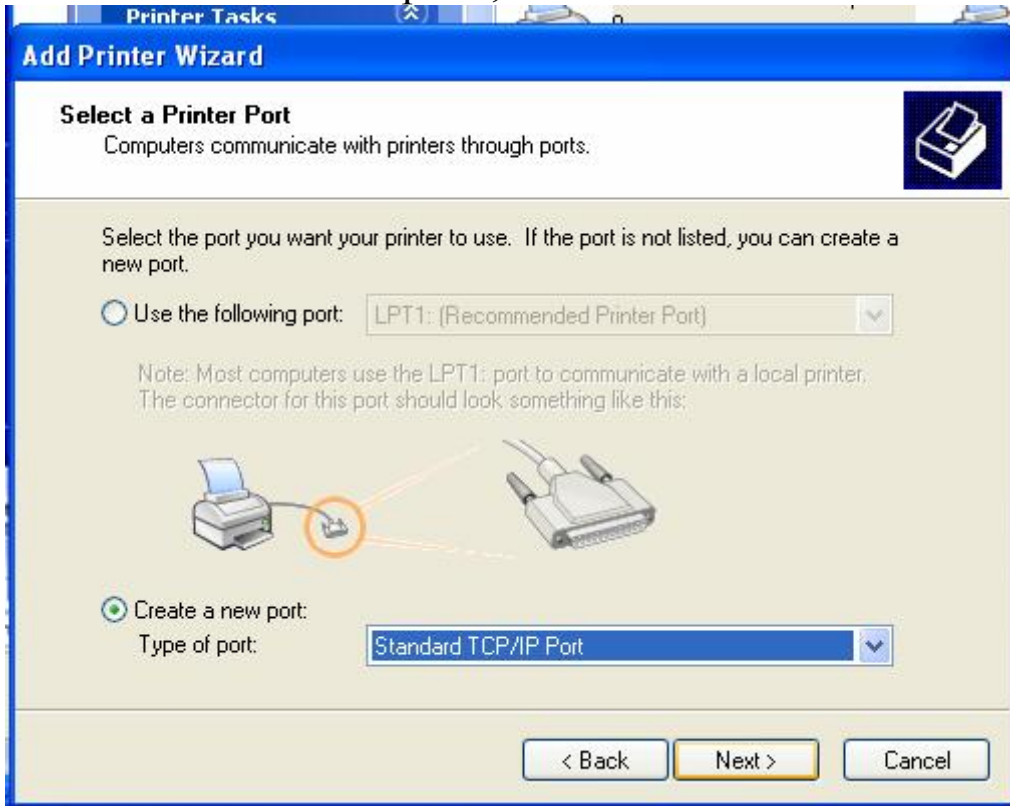
1. Click the start button
2. Click Control Panel
3. Double click “Printers and Faxes”
4. On the left side, click add a printer
5. Click Next



6. Select “Local printer attached to this computer”
 - a. uncheck “Automatically detect and install my Plug and Play printer”
 - b. then hit “Next”



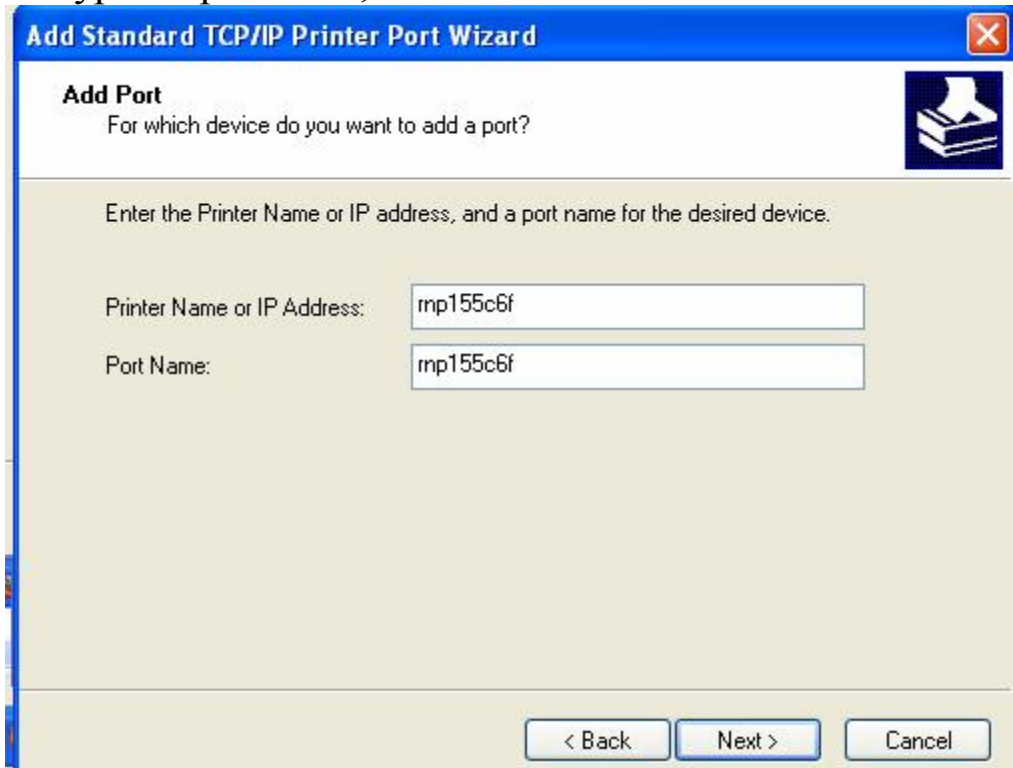
7. Click “Create a new port”, click the down arrow and select TCP/IP port, then hit next



8. On the next screen, it says “Welcome to...”, click Next



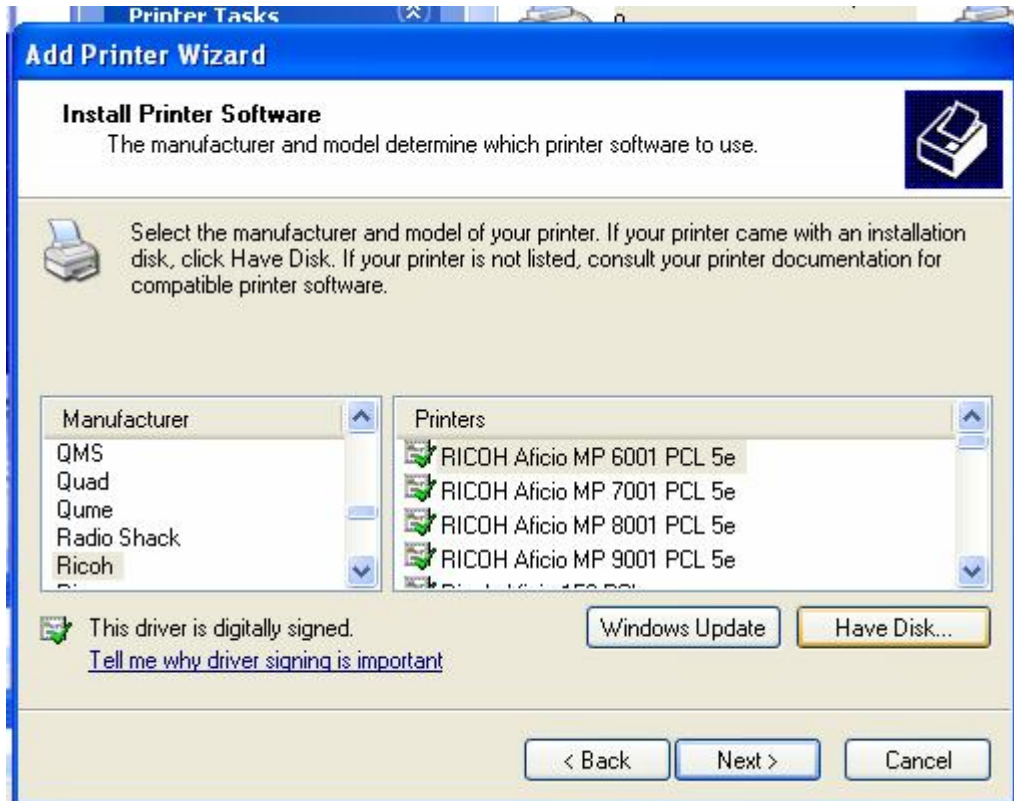
9. Type “rnp155c6f”, then click next



10. Click Finish



11. Click “Have Disk”

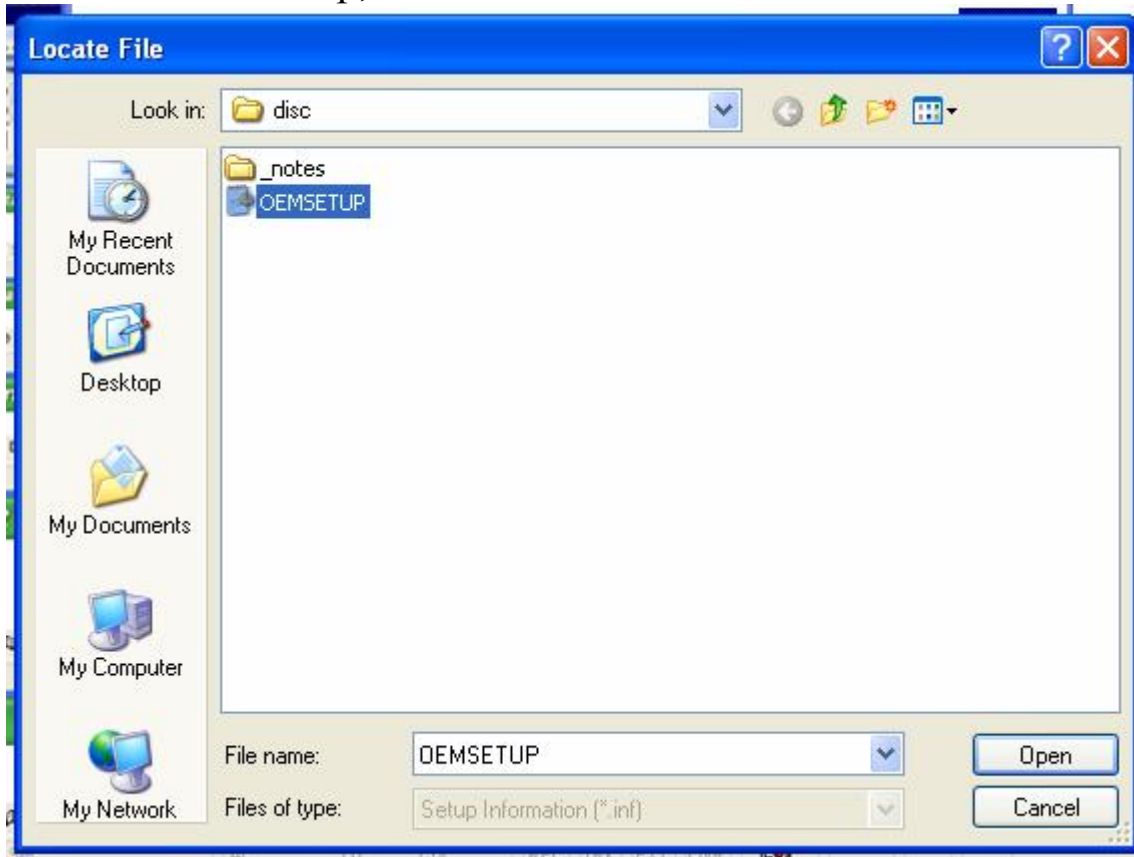


12. Navigate to where you unzipped the file you downloaded

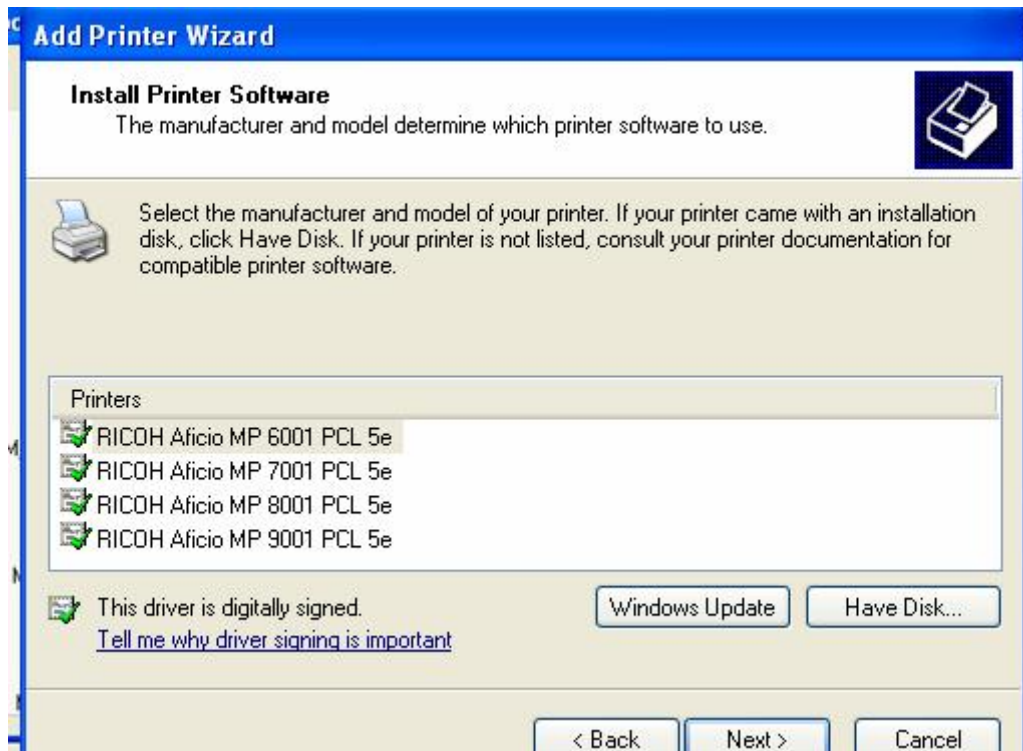


13. Click OK

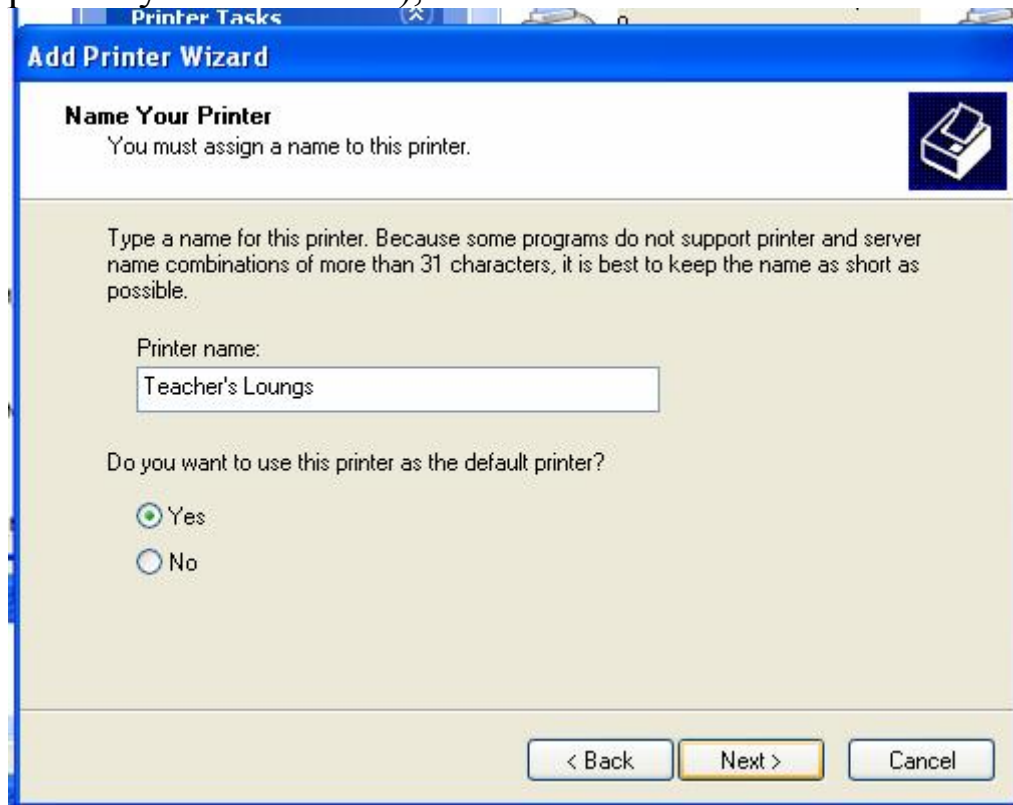
14. Click OEMsetup, then click Next



15. Select the first option, then click next



16. Name the printer “Teacher’s Lounge. (You can set it as your default printer, but you probably don’t want to), then click Next



17. Select Do not share this printer, Click Next

18. Print a test page, Click Next

19. Click Finish, then OK

20. You are done